



AL ASMAKH COMPLEX

INDUSTRIAL AREA

D O H A



LIVE.WORK.SHOP

Located in Doha's industrial area, Al Asmakh Complex is

- Mixed use development
- Dedicated to Corporate Staff.
- The “Live, Work and Shop” concept features staff accommodation, warehouses, offices and shops.





LOCATION

Industrial Area, Al Kassarat St.

PETROL STATION

- | | |
|--------------------------|-----------------------------|
| 1 Watan Petrol Station | 4 Salwa Petrol Station |
| 2 Watan Petrol Station | 5 Woqood Petrol Station |
| 3 Alsalam Petrol Station | 6 Industrial Petrol Station |

RESTAURANTS & SHOPS

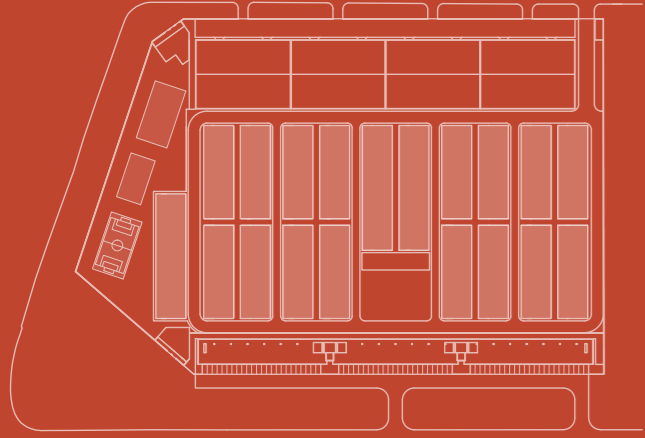
- | | |
|---------------------------|--------------------|
| 1 Pizza Hut | 4 Dragon mart |
| 2 Salwa Garden Restaurant | 5 Grand Mall Qatar |
| 3 Shawayat Al Khaleej | 6 Al Attiyah Souq |

COMPANIES & AGENCIES

- | | |
|-----------------------------|-------------------------------|
| 1 Porsche Service Centre | 5 Doha Petroleum Construction |
| 2 Quik Fit Center - Teyseer | 6 Honda Cars Main Service |
| 3 Fahes | 7 Nissan Service |
| 4 Kia Motors Service Center | 8 Bmw Service Center |

BANKS & GOVERNMENT

- | | |
|-------------------------|--|
| 1 QNB Souq Al Dossari | 4 Labor Department Office |
| 2 Commercial Bank | 5 Management of research and follow-up |
| 3 Al Zaman Exchange WLL | |



LIVE
STAFF ACCOMMODATION

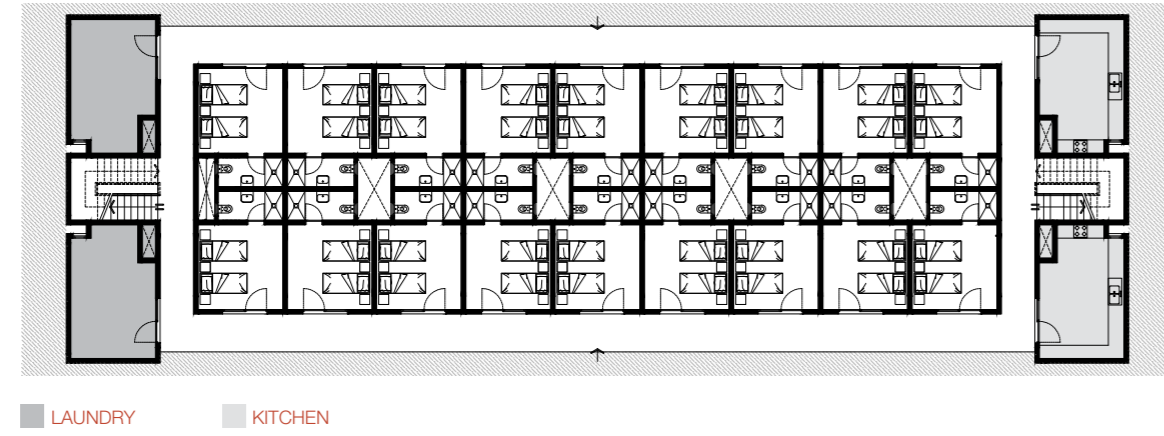
STAFF ACCOMMODATION

The residential section hosts 1232 units in addition to a multi-purpose hall, a landscaped environment, a basketball field in addition to an outdoor recreational area.

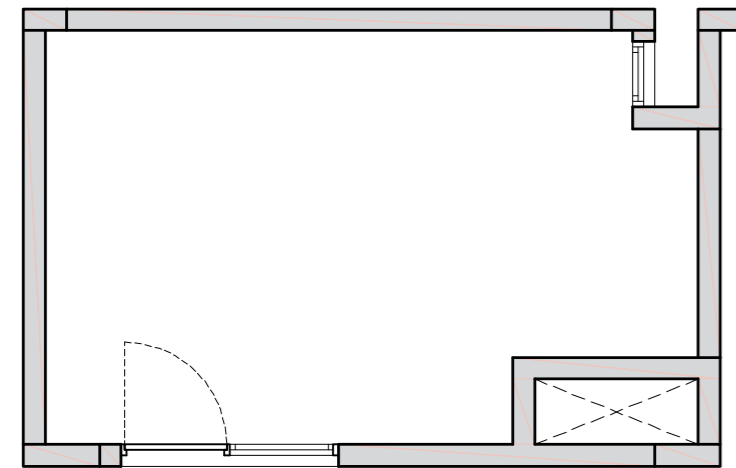
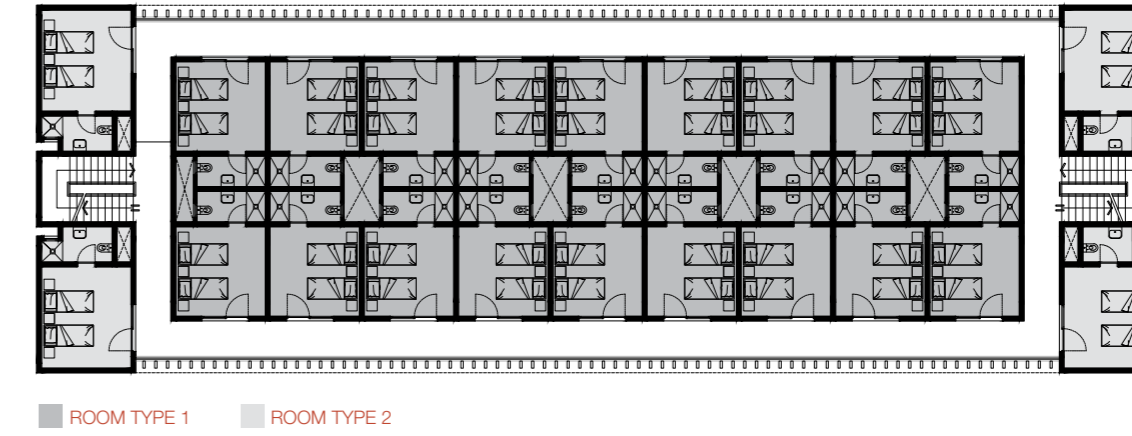
Other amenities include a supermarket, laundry, pantry, pharmacy, ATM machine, catering and more



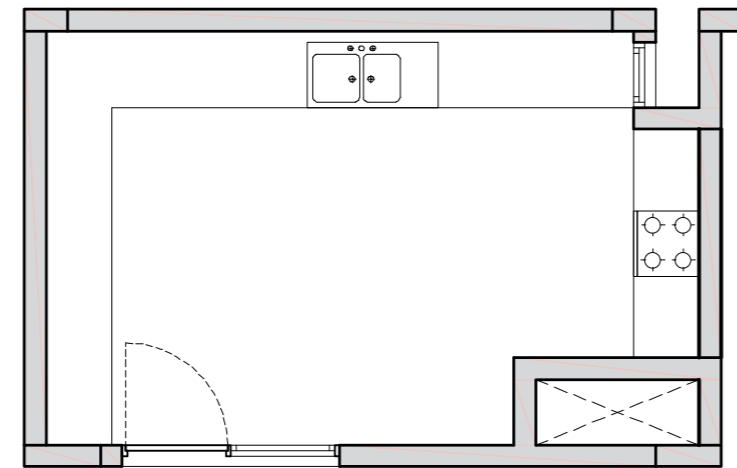
GROUND FLOOR



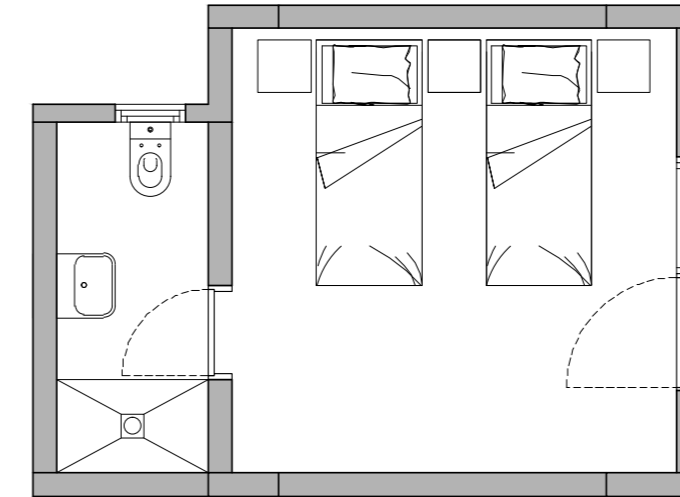
TYPICAL FLOOR



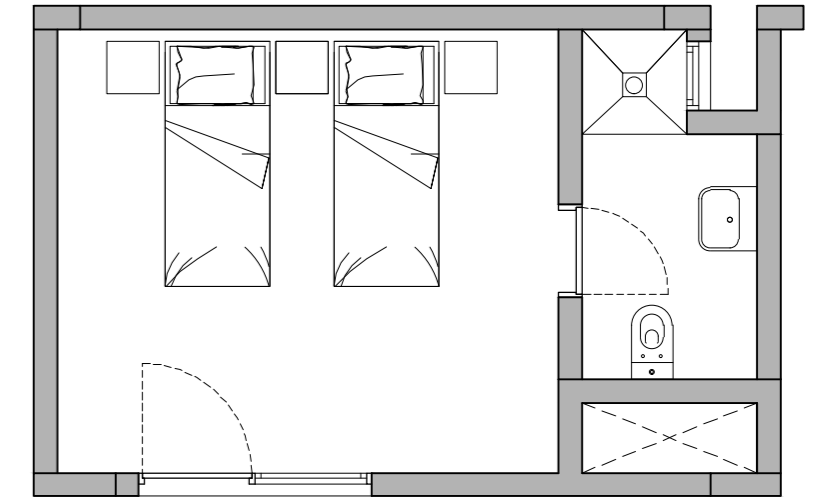
LAUNDRY
6000X3800



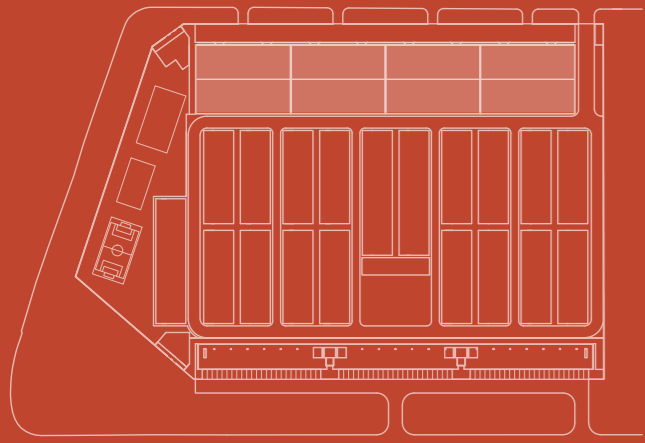
KITCHEN
6000X3800



ROOM TYPE 1
ROOM. 3800X3800 | BATH. 1300X3000



ROOM TYPE 2
ROOM. 4300X3800 | BATH. 1500X3000



WORK
W A R E H O U S E S

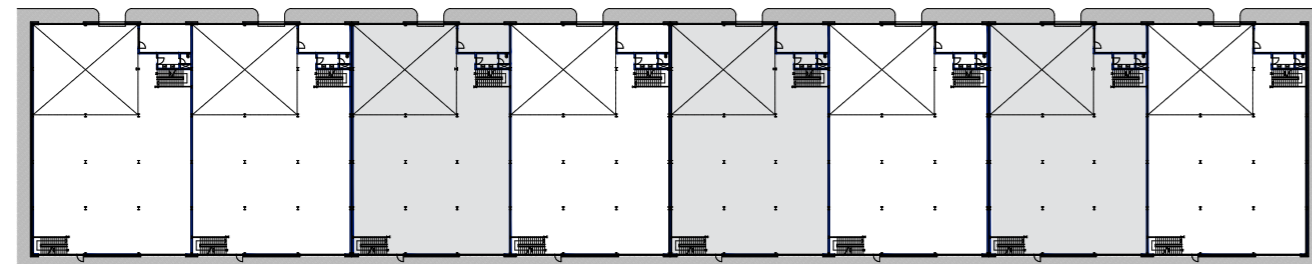
WAREHOUSES

8 ventilated storage units with street-access, made even easier thanks to the 4-meter wide overhead coiling door.

Storage units are divided into double-level lodges; the ground floor will enclose the office and the rest room (wc) whereas the upper level will be free-to-use based on convenience thanks to the mezzanine split-up.

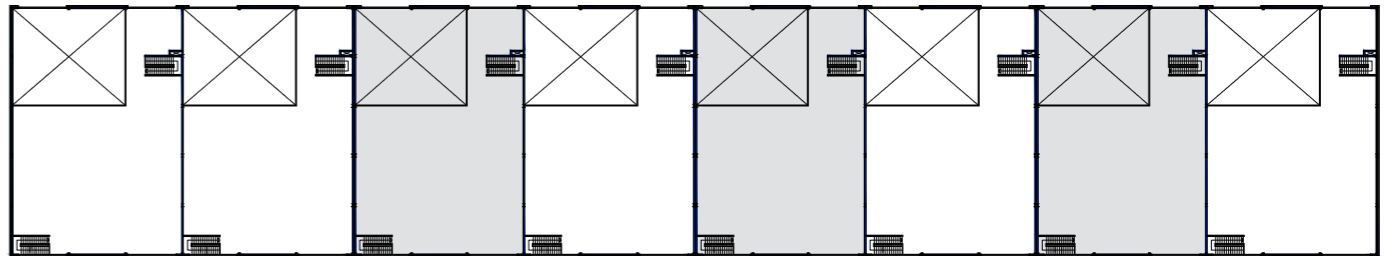


GROUND FLOOR

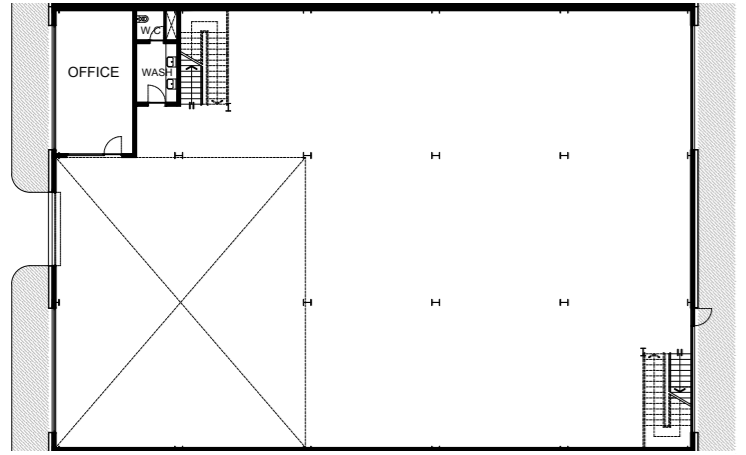


WAREHOUSE TYPE 1 WAREHOUSE TYPE 2

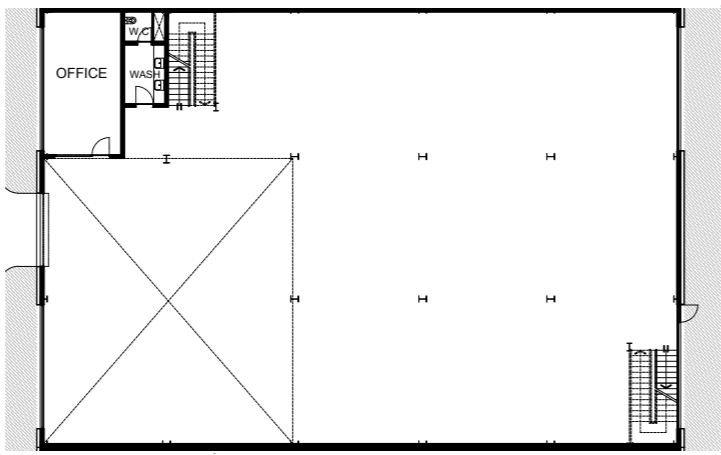
MEZZANINE FLOOR



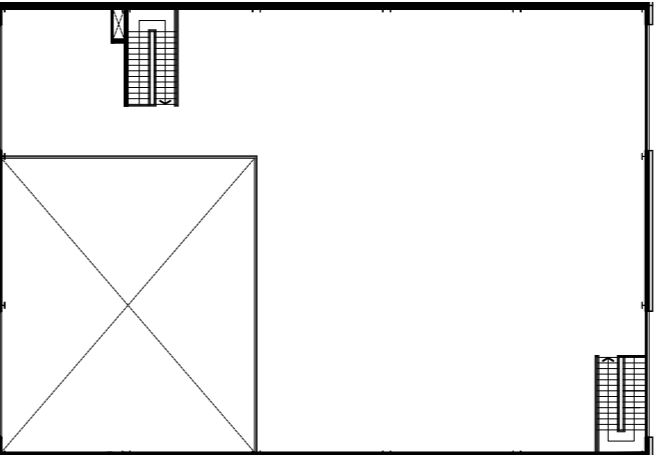
WAREHOUSE TYPE 1 WAREHOUSE TYPE 2



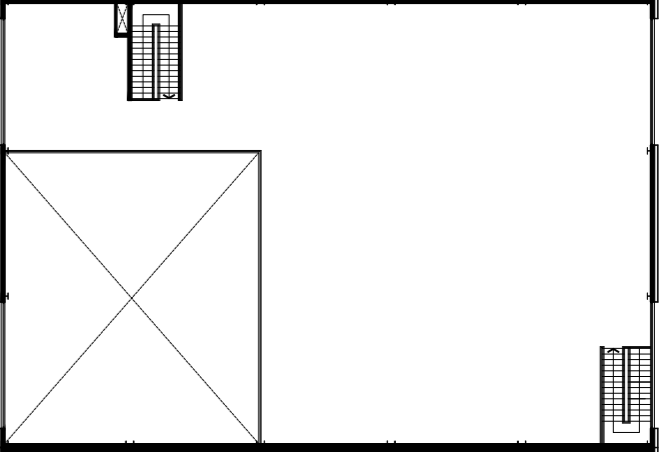
WAREHOUSE TYPE 1
OFFICE. 7800X4200 | WAREHOUSE. 23800X34600



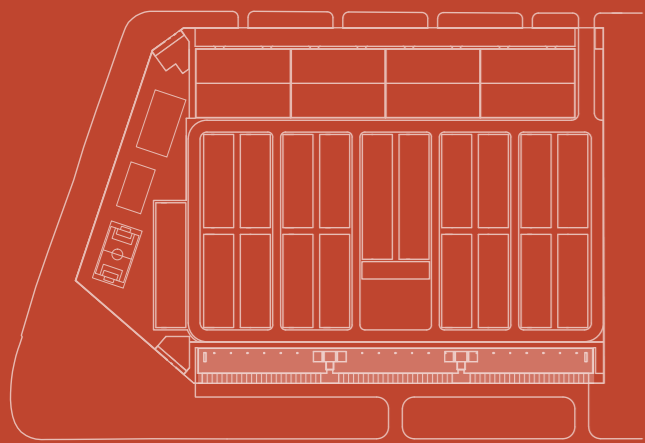
WAREHOUSE TYPE 2
OFFICE. 7800X4200 | WAREHOUSE. 23580X34600



WAREHOUSE TYPE 1
23800X21000



WAREHOUSE TYPE 2
23580X21000



SHOP

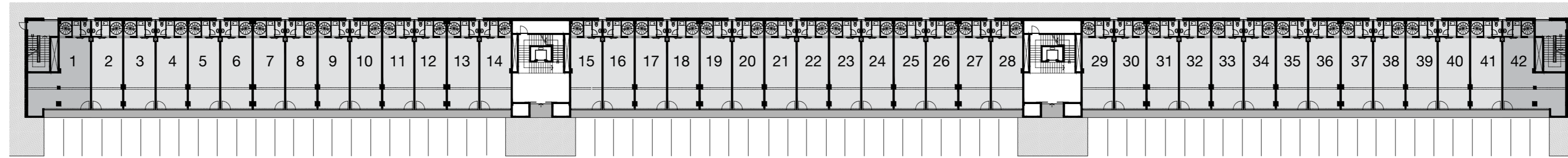
S H O P S & O F F I C E S

SHOPS & OFFICES

The atrium includes 42 shop units based on the ground floor, with direct street access and a fully-glazed façade overlooking the main street.

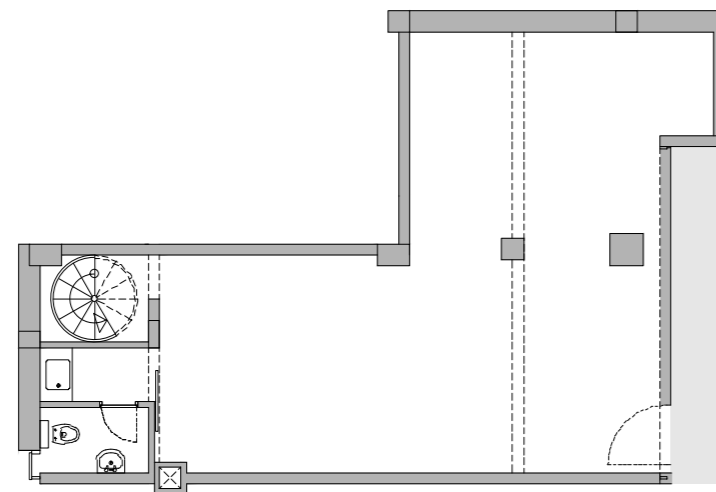


SHOPS



■ SHOP TYPE 1 (1 & 42)

■ SHOP TYPE 2 (2 TO 41)



SHOP TYPE 1

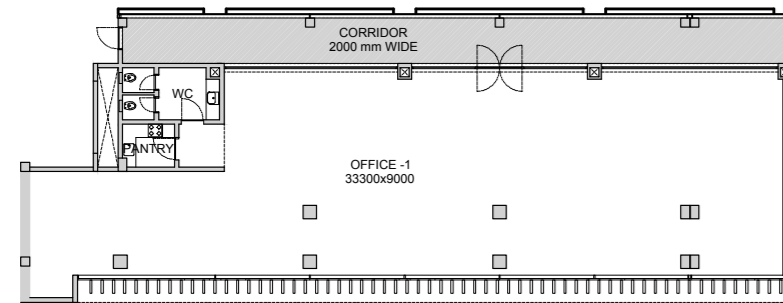
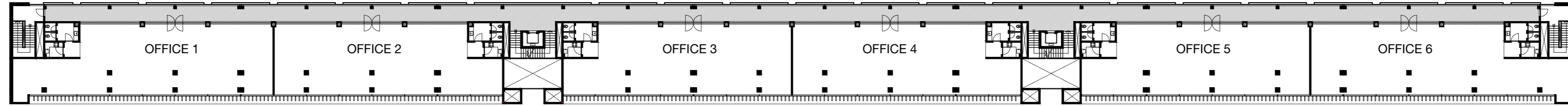
GF . 66.40 SQM | MF. 38.85 SQM | TOTAL . 105.25 SQM



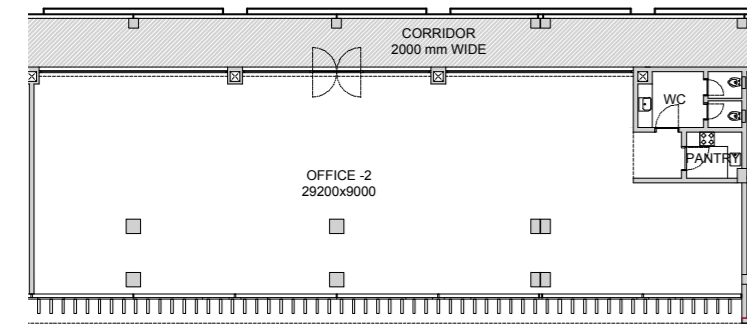
SHOP TYPE 2

GF. 45.40 SQM | MF. 31.00 SQM | TOTAL. 76.40 SQM

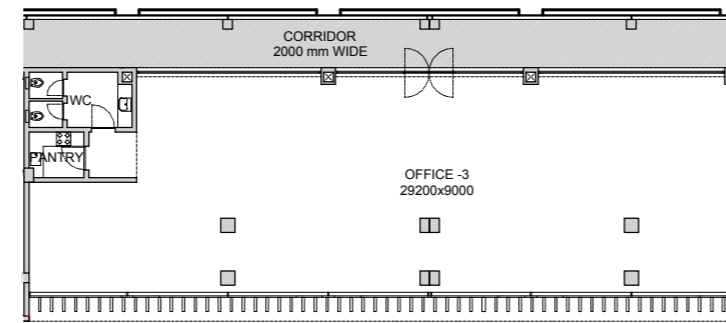
OFFICES



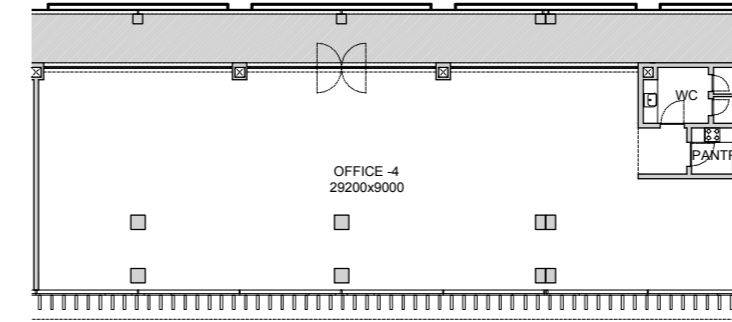
OFFICE 1



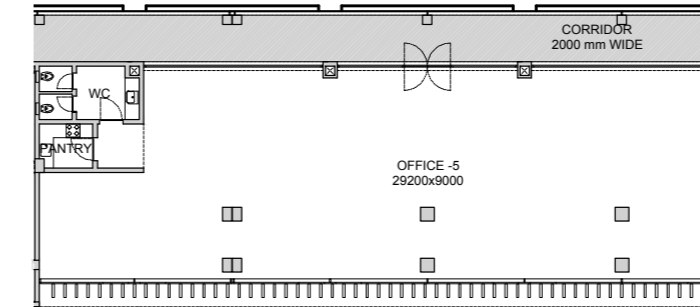
OFFICE 2



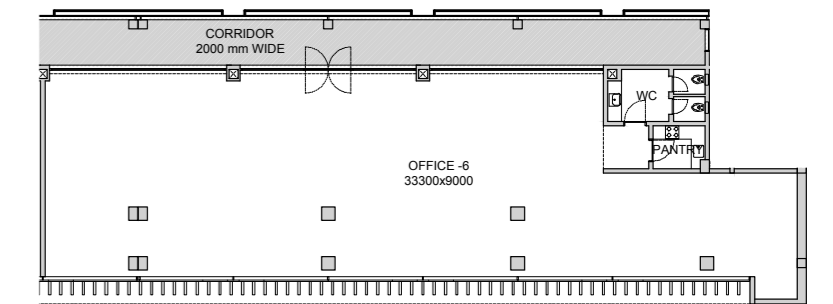
OFFICE 3



OFFICE 4



OFFICE 5



OFFICE 6



alasmakhrealestate.com

Tel +974 4448 5111 Fax +974 4435 4728

P.O.Box 15068 , Doha, Qatar

