

al mirqab
REAL ESTATE

الأسمك
AL ASMAKH
REAL ESTATE DEVELOPMENT

BURJ MARINA

A perfect place for your business...

Lusail



The smart city of the future.

Regarded as Qatar's freshest emerging city, Lusail spreads over 38 square kilometers and encloses 4 select islands with 19 multi-purpose residential, entertainment and commercial districts. The newly planned city of the coast is expected to accommodate around half a million people amid locals, expats, employees, retailers and visitors.

Lusail, also described as the city of the future, is destined to stand as Qatar's new main destination for public and private sectors, as well as for people seeking quiet and ecologically friendly residences where sustainability is the essence of life. The area will also be home for an all-inclusive arena with leisure destinations, commercial towers, island resorts, residential buildings, boulevards and public Marinas.



Work Smart, Work Fast.

Burj Marina is an iconic commercial tower located in the heart of Lusail City, offering a wide array of offices, showrooms, retail areas in addition to rooftop-sited restaurants just at the peak of the highest build in Lusail with staggering 38 floors of elevation to give you the most breath-taking scenery in the city.

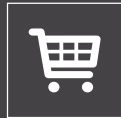




Burj Marina was designed with a stunning attention to details, keeping in mind the “every minute” features in order to illustrate this commercial project as the benchmark of grandiosity thanks to its great poise, flair and élan.

Starting from the multi-storied parking, capable of hosting around 1191 cars across all 5 parking levels, the 8 high-speed passengers’ elevators from KONE are capable of travelling at 5 meters per second and of carrying all visitors in a record-time, considered to be the fastest so far in Doha.





Amenities & Services.

Amenities

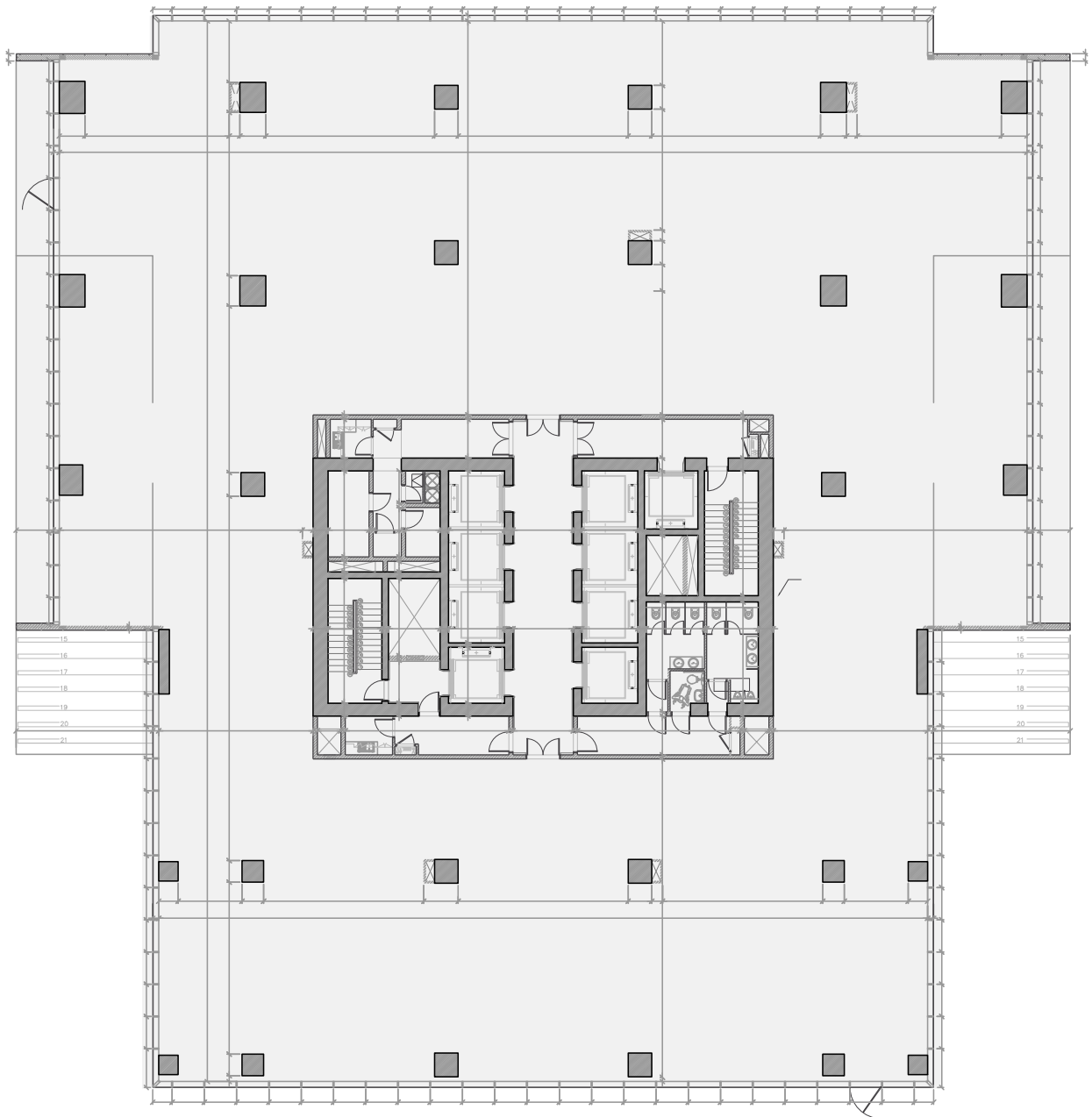
- | Gym
- | Coffee shop
- | Restaurants
- | Retail shops
- | Mini market
- | Bank
- | Fine and dine-in rooftops

Services

- | 24/7 security services
- | Maintenance
- | CCTV in all common areas of the tower
- | Huge parking podium of 5 floors

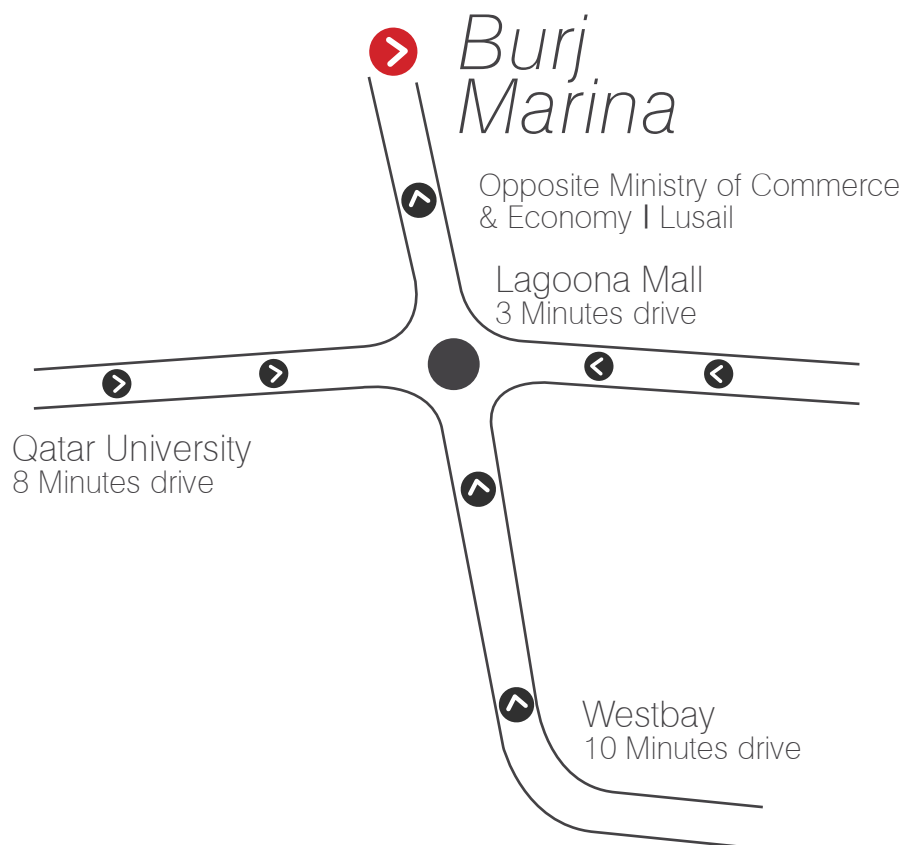
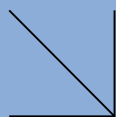
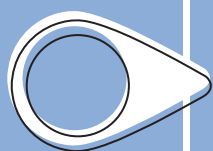


Typical Layouts



Typical Floors : From 1,666.69 SQM To 1,779.54 SQM

LOCATION



The strategic location.

Distance from Burj Marina

Ministry of Commerce	0.2 km
Lusail Entertainment City	2.0 Km
Doha Golf Club	3.8 Km
Lagoona Mall	4.7 km
The Pearl Qatar	5.5 Km
Qatar University	7.5 Km
West Bay City centre	11.5 km
Souq Waqif	15.5 Km
Hamad Intl Airport	31.5 km

Landmarks around the project

Ministry Of Commerce
 Lusail Express way
 Marina Yacht Club
 Marina District, Lusail
 Mondrian Hotel
 Grand Hyatt Hotel
 Ritz Carlton Hotel
 Doha Golf Club
 Lagoona Mall

Contact Us.

📞 00974 4448 5111

✉️ callcenter@alasmakhrealestate.com

🌐 www.alasmakhrealestate.com

🌐 www.almirqabrealestate.com

al mirqab
REAL ESTATE

الأسماخ
AL ASMAKH
REAL ESTATE DEVELOPMENT