

# Harmony

LUSAIL - FOX HILLS, D22







# Lusail City

Lusail City extends across an area of 38 square kilometres and includes four exclusive islands and 19 multi-purpose residential, mixed use, entertainment and commercial districts. It is a comprehensive arena with leisure spots, residential buildings, commercial towers, avenues and public Marinas.

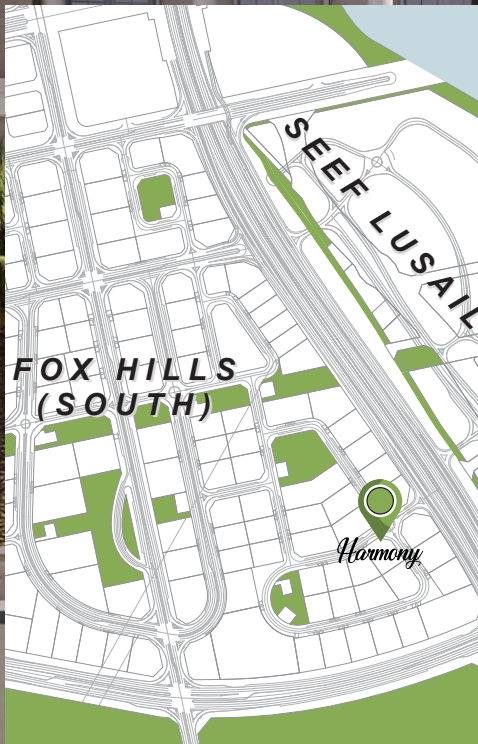
*Harmony*

LUSAIL - FOX HILLS, D22



# Harmony

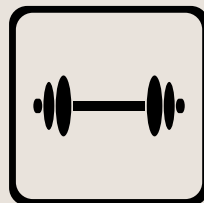
LUSAIL - FOX HILLS, D22







## Property Amenities

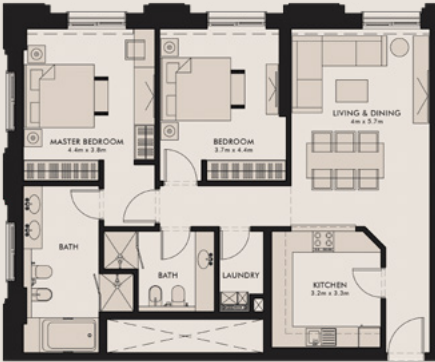


*Harmony*

LUSAIL - FOX HILLS, D22

# Ground Floor

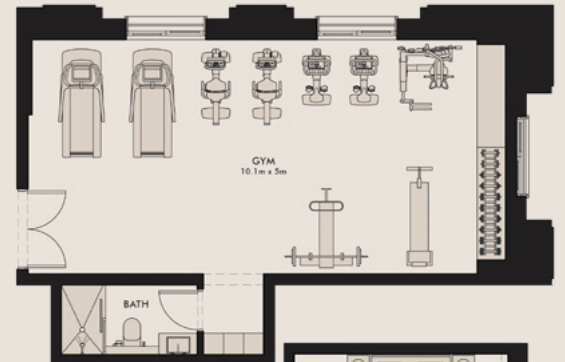
2-BDR, Unit G-06, G Floor



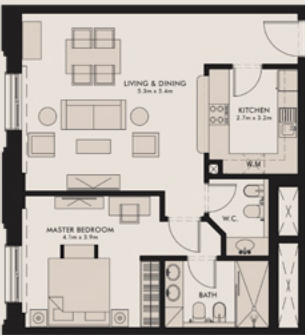
1-BDR, Unit G-07, G Floor



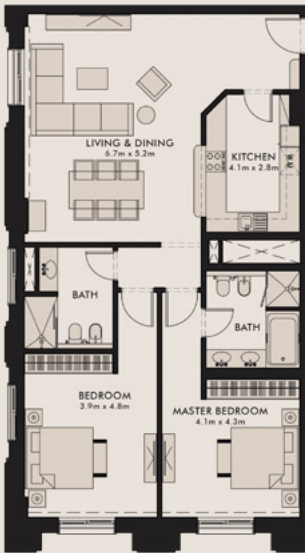
Gym, G Floor



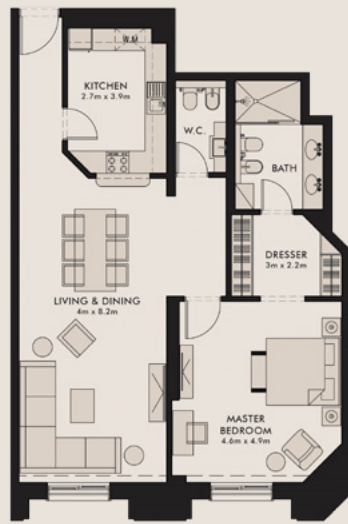
1-BDR, Unit G-05, G Floor



1-BDR, Unit G-01, G Floor



2-BDR, Unit G-04, G Floor



1-BDR, Unit G-03, G Floor



1-BDR, Unit G-02, G Floor



	G-01	G-02	G-03	G-04	G-05	G-06	G-07
Size (Sq.m)	83.74	87.57	105.34	131.59	79.13	114.92	80.49
Unit Type	1	1	1	2	1	2	1



# First Floor

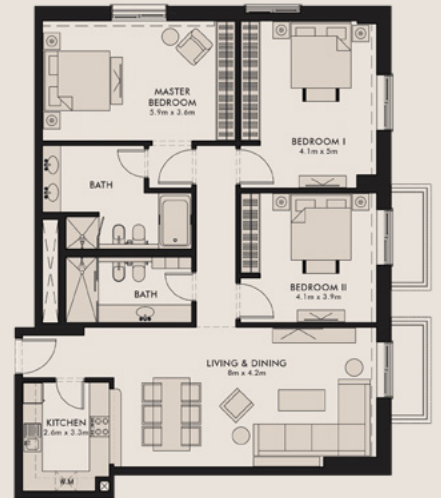
2-BDR, Unit F-06, 1st Floor



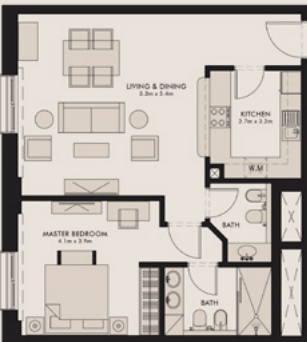
2-BDR, Unit F-07, 1st Floor



3-BDR, Unit F-01, 1st Floor



1-BDR, Unit F-05, 1st Floor



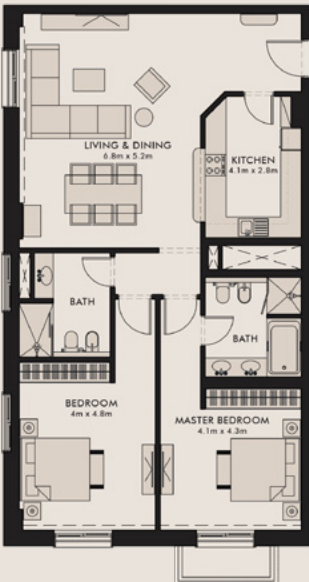
2-BDR, Unit F-02, 1st Floor



2-BDR, Unit F-03, 1st Floor



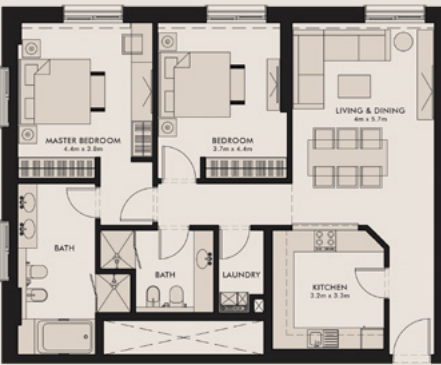
2-BDR, Unit F-04, 1st Floor



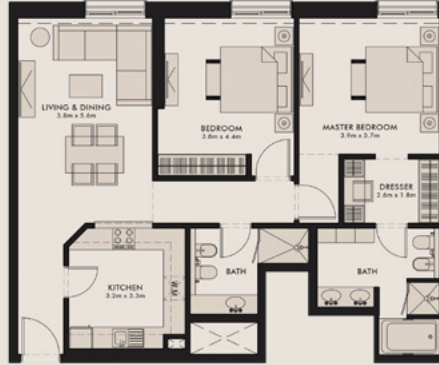
	F-01	F-02	F-03	F-04	F-05	F-06	F-07
Size (Sq.m)	151.68	129.77	150.64	131.59	79.13	114.92	109.45
Unit Type	3	2	2	2	1	2	2

# Typical 2<sup>nd</sup> to 4<sup>th</sup> Floor

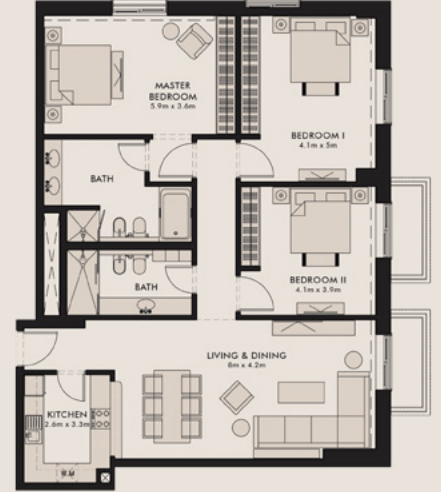
2-BDR, Unit T-06, 2nd to 4th Floor



2-BDR, Unit T-07, 2nd to 4th Floor

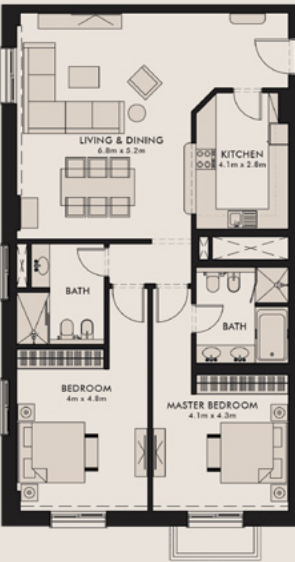


3-BDR, Unit T-01, 2nd to 4th Floor



1-BDR, Unit T-05, 2nd to 4th Floor

2-BDR, Unit T-02, 2nd to 4th Floor



2-BDR, Unit T-03, 2nd to 4th Floor

2-BDR, Unit T-04, 2nd to 4th Floor



	T-01	T-02	T-03	T-04	T-05	T-06	T-07
Size (Sq.m)	151.68	129.77	150.64	131.59	79.13	114.92	109.45
Unit Type	3	2	2	2	1	2	2



AL ASMAKH

REAL ESTATE DEVELOPMENT

[alasmakhrealestate.com](http://alasmakhrealestate.com)

